

GRACE LUTHERAN CHURCH

Albuquerque, New Mexico

New Church Building

The design is a response to German Lutheran churches of the past with a look to the future. The structure contains Romanesque images expressed in a contemporary manner.

The nave is organized to focus attention to the chancel. The vaulted ceiling points us heaven ward and is the brightest at its highest point. The stepped design of the pews at the side aisles and flexible chair seating allows people with disabilities to position themselves throughout the space. A future 20 rank pipe organ will be placed at the back of the nave, behind the choir, on an axis to the space.

The raised chancel places emphasis on the three Lutheran principles of worship: preaching (pulpit), sacrament (altar), and saving grace (baptism). The use of granite, wood, and steel for the custom design liturgical furniture complements the worship setting. Materials include concrete, sandstone, stucco, concrete shingles, slate flooring, birch hardwood, painted gypsum walls, douglas fir glue-lam beams, and spruce ceiling planking. Custom ceiling chandeliers, communion rail, and liturgical furniture were also commissioned. Stained glass windows flank the Nave.

\$1.5 Million

Dedicated: 1998

Design Architect: Robert Habiger

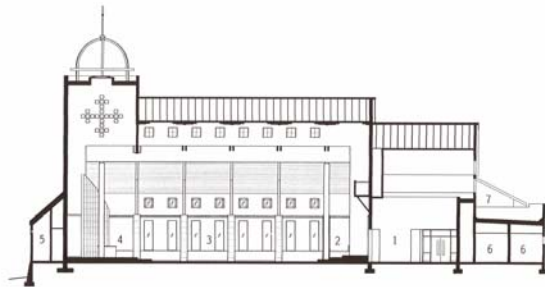
Architect of Record: RD Habiger & Associates Inc

Liturgical Design Consultant: Pastor Golter

Liturgical Furniture Design: Ken Griesemer and Robert Habiger

Awards:

Architectural Award of Excellence - Lutheran Extension Fund - 2000
 Religious Art Award of Excellence - Lutheran Extension Fund - 2000



GRACE LUTHERAN CHURCH
 LONGITUDINAL SECTION



1. NARTHEX
2. CHOR
3. NAWE
4. CHANCEL
5. SACRISTY
6. RESTROOM
7. EXISTING BUILDING BEYOND



1. PORCH
2. NARTHEX
3. NAWE
4. CHANCEL
5. CHOR
6. SACRISTY
7. RESTROOM
8. STORAGE
9. HANDICAP RESTROOMS
10. CONTROL ROOM
11. JANITOR'S CLOSET
12. EXISTING CHURCH CONVERTED TO FELLOWSHIP HALL
13. EXISTING OFFICES
14. COURTYARD

GRACE LUTHERAN CHURCH
 FLOOR PLAN



RD HABIGER & ASSOCIATES INC
 LITURGICAL DESIGN www.liturgydesign.com